



Okanagan IFPA

Okanagan Innovative Forestry Society

Forestry Plan

for the

**INNOVATIVE FORESTRY PRACTICES AGREEMENT
IN THE OKANAGAN TIMBER SUPPLY AREA**

to the

**Regional Manager
Ministry of Forests
Kamloops Forest Region
515 Columbia Avenue
Kamloops, British Columbia
V2C 2T7**

Prepared for

**The members of the
Okanagan Innovative Forestry Society**

www.Okanagan-IFPA.org

Prepared by:

**Riverside Forest Products Limited,
Thompson Forest Management
Forsite Consultants Ltd.**

December, 2001

EXECUTIVE SUMMARY

This Forestry Plan is submitted to the Regional Manager of the Kamloops Forest Region subsequent to the award of Innovative Forest Practices Agreements (IFPAs) to member Forest Licensees of the Okanagan Innovative Forestry Society (the “Society”) in the Okanagan Timber Supply Area (TSA) in October 2001.

The Society is a registered non-profit society established by eight major replaceable Forest Licensees operating in the Okanagan TSA as well as the Okanagan TSA Small Business Forest Enterprise Program of the Ministry of Forests. The Membership in the IFPA includes:

- Bell Pole Company – Lumby and Salmon Arm
- Federated Co-operatives Limited – Canoe
- Gorman Bros. Lumber Ltd. – Lumby and Westbank
- LP Engineered Wood Products Ltd. - Malakwa
- Riverside Forest Products Limited – Armstrong, Kelowna, and Lumby
- Selkirk Timber Company - Sicamous
- Tolko Industries Ltd. - Lavington
- Weyerhaeuser Company Ltd. – Lumby and Okanagan Falls
- Ministry of Forests Small Business Forest Enterprise Program (SBFEP) in the Okanagan TSA

The vision of the Society is to pursue sustainable forest management to enhance forest productivity so as to increase the harvest level of the Okanagan Timber Supply Area and sustain economic, social and environmental values for local communities.

The Society will direct investments into the public forestland in the Okanagan TSA. The objectives of the Society are:

- To ensure all Licensees with IFPA’s and the SBFEP are active participants in the Society through the implementation of innovative forestry practices,
- To collect new data towards providing a more accurate representation of the forest composition and expected rate of growth,
- To realize an increase in AAC in the Okanagan,
- To consider activities that will enhance and protect resource values as identified in the Okanagan-Shuswap Land and Resource Management Plan, and
- To create forestry related employment opportunities through the implementation of the Forestry Plan.

The Forestry Plan provides the background by which the member Licensees propose to conduct innovative forest practices under an area based arrangement within the Okanagan TSA. Once approved by the Regional Manager, under Section 59.1 of the Forest Act, the Forestry Plan, and subsequent amendments

to the Forestry Plan, will provide the direction for land base investments in the Okanagan. It may also provide justification upon which an incremental Allowable Annual Cut may be awarded by the Regional Manager of the Ministry of Forests to the participating Licensees.

An application for an uplift in AAC for the Okanagan TSA has not been included in this Forestry Plan. It is anticipated that a request will be submitted in a subsequent amendment to this plan following strategic analysis of the Okanagan TSA.

With the guidance of an approved Forestry Plan, the participating Licensees in the TSA will manage their operating areas in a manner that allows for certainty for their forest management activities and provide participating Licensees the opportunity to benefit from their IFPA forestry plan activities in the TSA.

The intent of this Forestry Plan is to identify initial opportunities for investment in landbase programs, through the IFPA, for the Okanagan Timber Supply Area.

TABLE OF CONTENTS

Executive Summary	i
Table of Contents	iii
List of Tables	v
List of Figures	vi
Glossary	vii
1.0 Introduction	1
1.1 Vision for the Okanagan IFPA.....	1
1.2 Goals of the Okanagan IFPA	1
1.3 IFPA Implementation Timelines	2
1.4 Okanagan Innovative Forestry Society.....	3
1.4.1 Membership	3
1.4.2 Organizational Structure.....	4
1.4.3 Board of Directors	4
1.4.4 IFPA Executive Director	4
1.4.5 Forestry Technical Committee	4
1.4.6 OIFS Advisory Panel.....	5
1.5 Objectives	5
1.6 Relationship to Okanagan-Shuswap LRMP	6
1.7 First Nations.....	6
1.7.1 Communication	6
1.7.2 Forestry Plan	6
1.7.3 Employment Opportunities.....	6
1.7.4 Business Opportunities	6
1.7.5 Advisory Panel.....	6
1.8 Public Review	6
1.9 Funding Sources.....	7
1.9.1 Membership Contributions	7
1.9.2 FRBC Multi-year Agreements (MYAs).....	7
1.9.3 Forest Investment Account (FIA).....	7
1.10 AAC Allocation.....	7
2.0 Okanagan Timber Supply Area	8
2.1 Overview.....	8
2.2 Key Map	9
2.3 Current Uses and Values	10
2.3.1 Environmental Values	10
2.3.2 Social Values	11
2.3.3 Economic Values	12
2.3.4 Current Employment in the Forest Industry	12
2.3.5 Employee Levels by Licencee.....	13
2.3.6 AAC by Licencee	14
2.3.7 Stumpage/Taxes Paid by the Forest Industry.....	16
2.3.8 Other Forest Resource Industries	16
2.4 Inventories	16
3.0 Innovative Forestry Practices	18
3.1 Strategic Analysis	18
3.2 Proposed Innovative Forestry Practices	18

3.2.1 Landbase	19
3.2.2 Growth & Yield	20
3.2.3 Management Practices	20
3.2.4 Additional Activities	21
3.3 Management Objectives	21
3.3.1 Timber.....	21
3.3.2 Conservation and Enhancement of Non-Timber Values	21
3.4 Economics	21
3.5 Information Management Systems.....	21
4.0 Work Plan and Five Year Schedule.....	22
4.1 Planned Treatments.....	22
4.2 Employment.....	22
4.3 Funding Sources and Investment Plan.....	22
4.4 Net Expected AAC Gain.....	22
4.5 Future Management Plans	23
4.6 Communications and Extension.....	23
5.0 Timber Supply Analysis	24
5.1 Okanagan Shuswap LRMP Base Case Timber Supply Analysis Methodology..	24
5.2 Innovative Practices Scenario	24
6.0 References	25
Appendix I – IFPA Enabling Legislation.....	26
Appendix II - Okanagan TSA Tenure/Operating Area Map.....	29
Appendix III – OIFS Structure	30
Appendix IV – OIFS Communication Strategy.....	32
Appendix V – Forestry Plan Advertising.....	45
Appendix VI – Forestry Plan Public Review Comments and ConsiderationS	65
Appendix VII – Monitoring Plan	79
Appendix VIII – Okanagan IFPA Annual Workplan and Five Year Plan	81
Appendix IX – Proposed Projects of the Okanagan IFPA Forestry Plan	82
Appendix X – Employment Forecasts Associated With IFPA Activities.....	91
Appendix XI – Timber Supply Analysis Data Package for the Okanagan Shuswap LRMP Base Case Timber Supply	92
Appendix XII – Timber Supply Analysis – Okanagan Shuswap LRMP Base Case Results.....	93
Appendix XIII – Inventory Gaps Identified by Chief Forester	94
Appendix XIV – Inventory Information Gathering Methodology.....	96
Appendix XV – Inventory Information for the Okanagan TSA.....	99

LIST OF TABLES

Table 1. Potential employment and employment income supported by the current AAC in the Okanagan Region and percentage of local employment/income.....	12
Table 2. Okanagan TSA employment and employment coefficients by forest industry activity.	13
Table 3. Employment levels by licensee and forest industry activity in the Okanagan Region.....	14
Table 4. 1996 AAC determination apportionment by licence type in the Okanagan TSA.	15
Table 5. AAC apportionment by replaceable forest licenses in the Okanagan TSA as per TSR I (1996).	15
Table 6. Provincial revenue generated directly by the Okanagan forest industry by revenue type.	16
Table 7. Summary of proposed expenditures and employment associated with IFPA scheduled activities.....	21
Table 8. Ministry of Forests September, 2001 Forestry Plan Review Comments and IFPA Response.....	65
Table 9. Ministry of Sustainable Resource Management September, 2001 Forestry Plan Review Comments and IFPA Response.	67
Table 10a. Public Comments and IFPA Response from the Forestry Plan Public Review held in Penticton, B.C. on September 19, 2001.	71
Table 10b. Public Comments and IFPA Response from the Forestry Plan Public Review held in Kelowna, B.C. on September 25, 2001.	71
Table 10c. Public Comments and IFPA Response from the Forestry Plan Public Review held in Salmon Arm, B.C. on October 2, 2001.	72
Table 10d. Public Comments and IFPA Response from the Forestry Plan Public Review held in Vernon, B.C. on October 16, 2001.	73
Table 11 Okanagan IFPA Annual Workplan and Five-year Plan Summary	81
Table 12. Okanagan IFPA Annual and Five-year Employment Forecasts	91
Table 13. Inventory and information gaps identified by the Chief Forester with associated IFPA eligibility.	94
Table 14. Existing Inventory Information for the Okanagan TSA.....	99

LIST OF FIGURES

Figure 1. Okanagan Innovative Forestry Society organizational structure as of September, 2001. 4

Figure 2. Key map of the Okanagan TSA. 9

Figure 3. Letter received from the Shuswap Nations Tribal Council during the public review period for the September, 2001 Okanagan IFPA Forestry Plan. 69

Figure 4. Letter received from Mr. William Clark during the public review period for the September, 2001 Okanagan IFPA Forestry Plan. 75

Figure 5. Okanagan IFPA response to the letter received from Mr. William Clark during the public review period for the September, 2001 Okanagan IFPA Forestry Plan. 76

GLOSSARY

- AAC – Annual Allowable Cut:** The allowable rate of timber harvest from a specified area of land as determined by the Chief Forester.
- CWD – Coarse Woody Debris**
- ESA – Environmentally Sensitive Area:** is defined during a forest inventory as an area that is sensitive to disturbance and/or is significantly valuable for fisheries, wildlife, water and recreation resources.
- FRBC – Forest Renewal British Columbia**
- IDF – Interior Douglas-fir:** a zone of the biogeoclimatic ecosystem classification system
- IFPA - Innovative Forestry Practices Agreement:** Innovative Forestry Practices Agreements are a provincial government initiative designed to test and pilot alternative and new approaches to forest resource management.
- IWMS – Identified Wildlife Management Strategy**
- LRUP – Local Resource Use Plan**
- LU – Landscape Unit**
- MHA – Minimum Harvestable Age**
- MOELP – Ministry of Environment Lands and Parks:** This ministry has been re-organized into the Ministry of Sustainable Resource Management and the Ministry of Water, Air and Land Protection
- MOF – Ministry of Forests**
- MSRM – Ministry of Sustainable Resource Management:** Formerly part of the Ministry of Environment, Lands and Parks.
- MWALP – Ministry of Water, Air and Land Protection:** Formerly part of the Ministry of Environment, Lands and Parks.
- MYA – Multi-Year Agreement:** MYAs are contractual commitments between FRBC and forest licencees that provide ongoing funding over several years for eligible activities.
- NDT4 – Natural Disturbance Type 4:** Forested zones that historically have been subject to frequent, low intensity disturbances (i.e. fires).
- NTHLB – Non-timber Harvesting Landbase:** The portion of the landbase that is not considered available for harvest.
- OAF – Operational Adjustment Factors:** These factors are applied to projected timber yields generated from computer models to account for losses of timber volumes as a result of pests, diseases, brush competition and other factors.

OGMA – Old Growth Management Area: areas which contain, or are managed to replace, specific structural old-growth attributes and which are mapped out and treated as special management areas.

OIFS – Okanagan Innovative Forestry Society

OSLRMP – Okanagan-Shuswap Land and Resource Management Plan: The Okanagan-Shuswap Land and Resource Management Plan is a strategic level plan providing guidance for activities conducted on Crown land in the Okanagan and Shuswap regions for a ten year period.

PEM – Predictive Ecosystem Mapping: PEM is a method of predicting ecosystem occurrence on the landscape given basic inventory information and expert knowledge.

RIC – Resources Inventory Committee: Represented by the MoF, MSRM and the MWALP and responsible to develop provincial standards for landbase resource inventories in British Columbia.

SIBEC – Site Index Biogeoclimatic Ecosystem Classification

SBFEP – Ministry of Forests Small Business Forest Enterprise Program in the Okanagan Timber Supply Area

TEM – Terrestrial Ecosystem Mapping: Terrestrial Ecosystem Mapping is the stratification of a landscape into map units, according to a combination of ecological features, primarily climate, physiography, surficial material, bedrock geology, soil, and vegetation.

THLB – Timber Harvesting Landbase: The portion of the landbase that is considered available for harvest.

TSA – Okanagan Timber Supply Area: The Okanagan Timber Supply Area contains the Forest Districts of Penticton, Vernon and Salmon Arm within the Kamloops Forest Region.

TSR – Timber Supply Review: This is the process by which the Chief Forester, after considering all ecological, social and economic factors determines the annual allowable cut within TSAs. In the Okanagan TSA, TSR I was completed in 1996 while TSR II was completed in August of 2001.

VRI – Vegetation Resource Inventory: Vegetation Resources Inventory is a process for assessing the quantity and quality of BC's timber and other vegetation resources. When it is fully operational, the Vegetation Resources Inventory will replace BC's current forest inventory.

WHA – Wildlife Habitat Area

WTP – Wildlife Tree Patch

1.0 INTRODUCTION

This Forestry Plan has been developed as required by legislation subsequent to the award of Innovative Forestry Practices Agreements (IFPA) between participating forest licensees in the Okanagan Timber Supply Area (TSA) and the Minister of Forests in October 2001. This document covers the period of September 2001 through September 2006.

This Forestry Plan represents the combined strategy of the membership of the Okanagan Innovative Forestry Society (the "Society") comprised of Forest Licensees and the Ministry of Forests Small Business Forest Enterprise Program in the Okanagan TSA. The Forestry Plan defines the forest management strategies the IFPA holders will follow for the term of the plan.

The licensees will not be seeking an increase in the allowable annual cut (AAC) within the scope of this Forestry Plan. It is expected that the Forestry Plan will be amended following the completion of the Okanagan Shuswap LRMP base case Timber Supply Analysis and Silviculture II Strategy at which time an increase may be requested. The intent of this Forestry Plan is to identify key projects and initiatives identified by the Society and request acknowledgement of these projects and initiatives by the Regional Manager as being eligible IFPA activities.

1.1 Vision for the Okanagan IFPA

The Okanagan Innovative Forestry Society will pursue sustainable forest management to enhance forest productivity so as to increase the harvest level of the Okanagan Timber Supply Area and sustain economic, social and environmental values for local communities.

1.2 Goals of the Okanagan IFPA

1. Submit a request for an increase in AAC by August, 2002. The increase in ACC may¹ be achieved through the completion of:
 - Predictive Ecosystem Mapping and Site Index Assignment for the dry belt ecosystems in the Okanagan TSA
 - Silviculture II Strategy identifying key silviculture and enhanced forestry activities
 - Other projects as identified through the Okanagan Shuswap LRMP base case analysis

¹ Word "may" (Revised March 8, 2002)

2. Submit a request for an additional increase in AAC to the Regional Manager, Ministry of Forests by March, 2004. The increase in ACC may² be achieved through the completion of:

- Vegetation Resource Inventory (VRI)
- Predictive Ecosystem Mapping (PEM) and Site Index Assignment (SIBEC) for the wet belt Ecosystems in the Okanagan TSA
- Other innovative forest practices and management strategies.

1.3 IFPA Implementation Timelines

- February 2001 - the Minister of Forests approved the Cooperative Forestry Agreement for the Okanagan TSA
- May 2001 – IFPA proposal was submitted to the Minister of Forests
- June 2001 – OIFS released a request for proposals for Site Index Assignment project
- June 2001 – OIFS released a request for proposals for a Terrestrial Ecosystem Mapping (TEM) / Predictive Ecosystem Mapping (PEM) project
- July 2001 – OIFS is registered as a non-profit society
- August 2001 – Okanagan TSR 2 rationale released by the Chief Forester
- September 2001 – IFPA offer and signing
- September 2001 – Beginning of the 60 day review period for the Forestry Plan
- November 2001 – Conclusion of the 60 day Forestry Plan review process.
- November 2001 – Submission of Forestry Plan to Regional Manager
- December 2001 – Completion of Silviculture II strategy for Okanagan TSA
- February 2002 – Anticipated response from government agencies regarding the Forestry Plan
- February 2002 – Anticipated final approval of the Forestry Plan by government agencies
- June 2002 – Projected completion of PEM and SIBEC assignment for dry belt in Okanagan TSA
- September 2002 - Anticipated submission of a Forestry Plan amendment requesting an AAC uplift based on the results of the Silviculture II Strategy, Site Index Assignment in the wetbelt (including a Site Index Elevation Model), PEM/SIBEC assignment in the drybelt, VRI Phase 2 (inclusive of NVAF) and other projects as identified³
- November 2003 – Projected completion of wetbelt and TSA PEM and SIBEC assignment
- March 2004 – Projected completion of Vegetation Resource Inventory (VRI) for the Okanagan TSA
- June 2004 – Anticipated submission of Forestry Plan amendment requesting an AAC uplift based on the results of the PEM, VRI and Site Index Assignment projects

² Word “may” (Revised March 8, 2002)

³ Revised to reflect updated timing and projects as part of a minor amendment to the Forestry Plan (Revised June 1, 2002)

1.4 Okanagan Innovative Forestry Society

The holders of replaceable Forest Licences and the Ministry of Forests' Small Business Forest Enterprise Program (SBFEP) in the Okanagan TSA have entered into a registered non profit Society known as the "Okanagan Innovative Forestry Society" (the "Society") for the purposes of evaluating and directing the investment levels of a co-operative Forestry Plan in the Okanagan TSA.

The Society is governed by a Board of Directors and managed by an IFPA Executive Director with support from the Forestry Technical Committee and the OIFS Advisory Panel.

1.4.1 Membership

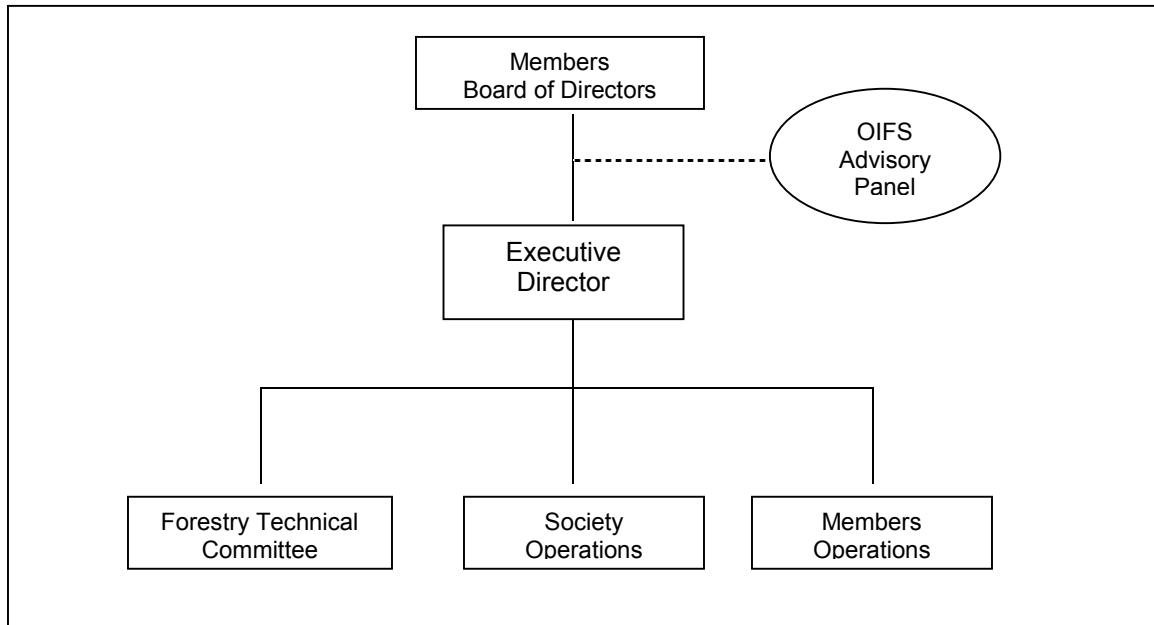
The Society membership includes eight Licensees in the Okanagan TSA and the Ministry of Forests Small Business Forest Enterprise Program in the Okanagan TSA. These members are as follows:

- Bell Pole Company – Lumby and Salmon Arm
- Federated Co-operatives Limited – Canoe
- Gorman Bros. Lumber Ltd. – Lumby and Westbank
- LP Engineered Wood Products Ltd. - Malakwa
- Riverside Forest Products Limited – Armstrong, Kelowna, and Lumby
- Selkirk Timber Company - Sicamous
- Tolko Industries Ltd. - Lavington
- Weyerhaeuser Company Ltd. – Lumby and Okanagan Falls
- Ministry of Forests Small Business Forest Enterprise Program in the Okanagan TSA

1.4.2 Organizational Structure

The organization structure of the Society (Figure 1) has been designed to provide a simple but effective mechanism for developing strategic goals, achieving the strategic goals through operational delivery and for the input of external advice.

Figure 1. Okanagan Innovative Forestry Society organizational structure as of September, 2001.



1.4.3 Board of Directors

The Society membership elects, annually, a Board of Directors to provide the strategic direction to be taken by the Society.

1.4.4 IFPA Executive Director

The Board of Directors appoints an IFPA Executive Director who is responsible for coordinating operational issues on behalf of the Society.

The office of the IFPA Executive Director is:

IFPA Executive Director
Okanagan Innovative Forestry Society
 c/o Riverside Forest Products Limited
 RR #2 4280 Highway 6
 Lumby, British Columbia
 V0E 2G0

1.4.5 Forestry Technical Committee

The Forestry Technical committee is made up of Professional Foresters and Forest Technicians representing each of the

members of the Society. In addition, there is government representation by the Ministry of Forests, the Ministry of Sustainable Resource Management and the Ministry of Water, Air and Land Protection.

The technical team is responsible for translating the Board's strategic directives into tangible and appropriate activities on the ground.

1.4.6 OIFS Advisory Panel

The OIFS Advisory Panel provides input to the Board of Directors on strategic direction, government policy and First Nations issues. The OIFS Advisory Panel is comprised of the Society Executive and key representation from the government and First Nations, including the following:

- Regional Manager of the Ministry of Forests
- Regional Director of the Ministry of Water, Land and Air Protection
- Regional Director of the Ministry of Sustainable Resource Management,
- Okanagan Nations Alliance,
- Shuswap Nations Tribal Council⁴ and
- Spallumcheen Indian Band.

The Executive Director and current membership of the Board of Directors and the Technical Committee of the Society as of September 10th, 2001 are identified in Appendix III.

1.5 Objectives

The implementation of the Okanagan TSA Innovative Forestry Practices Agreement should meet the following objectives:

- To ensure all Licensees with IFPA's and the SBFEP are active participants in the Society through the implementation of innovative forestry practices as outlined in the Forest Act, Innovative Forestry Practices Regulation, and this Forestry Plan,
- To collect new data, in accordance with accepted Resource Inventory Committee methodologies or otherwise, and analyse this data in accordance with practices accepted by the Chief Forester through discussions with the MoF Regional Manager Kamloops Forest Region, to provide more accurate representation of the forest composition and expected rate of growth compared to existing data,
- To realize an increase in AAC in the Okanagan TSA and in the IFPA holders' Forest Licenses and the MoF SBFEP,
- To consider activities that will enhance and protect resource values as identified in the OSLRMP, and
- To create forestry related employment opportunities through the implementation of the Forestry Plan.

⁴ Shuswap Nations Tribal Council added to the Advisory Panel as part of a minor amendment of the Forestry Plan (Revised June 1, 2002)

1.6 Relationship to Okanagan-Shuswap LRMP

The OSLRMP is a strategic level plan providing guidance for activities conducted on Crown land for a ten year period. The terms of reference for the OSLRMP were developed in 1996 followed by five years of negotiations amongst 55 parties, representing a wide range of interest groups. The Okanagan-Shuswap LRMP was approved in January 2001 by the provincial government to be implemented as cabinet policy.

The OIFS will use the OSLRMP as a foundational guiding document in determining strategies to enhance, maintain and recruit forest resources and values.

1.7 First Nations⁵

The Society has adopted the following principles for building and maintaining relationships with First Nations:

1.7.1 Communication

The Society will endeavor to communicate effectively with First Nations bands, by providing access to information gathered by the Society or its membership, including invitations to workshops, meetings with the bands, periodic newsletters and postings on the Society's website.

1.7.2 Forestry Plan

The Society will endeavor to collect input from First Nations during the preparation phase of the Forestry Plan and its subsequent amendments.

1.7.3 Employment Opportunities

OIFS members will endeavor to identify economic and employment opportunities for First Nations arising out of the implementation of the Forestry Plan. Further, the Society will attempt to notify First Nations when competitive bid contracts are made available to retain qualified service providers.

1.7.4 Business Opportunities

Individual IFPA members will endeavor to explore business opportunities of mutual benefit to the First Nations band and the Forest Licensee.

1.7.5 Advisory Panel

First Nations Tribal Councils and local Indian bands will be invited to participate on the Advisory Panel providing strategic input to the Society Executive of interest to First Nations and/or on matters relating to OIFS program.

1.8 Public Review

The Society communicated with the Public and First Nations regarding the work of the OIFS including input on the forestry plan.

The Forestry Plan was available for review and comment for a period of 60 days. The Forestry Plan was advertised during this time period in local Okanagan community newspapers (See Appendix V). Copies of the plan were also available for review on the OIFS website (www.okanagan-ifpa.org) and at the Society member's offices throughout the Okanagan during the 60 day period.

The public review process included open houses in Penticton, Kelowna, Vernon and Salmon Arm

The Forestry Plan is posted on the Society's website at www.okanagan-ifpa.org.

Comments on the Forestry Plan received and considered through the public review process have been incorporated into the Forestry Plan. Where comments received are not incorporated into the plan, a rationale has been provided.

Detail on the advertising and public review process has been included in Appendix IV.

⁵ Section contains minor changes as part of minor amendments to the Forestry Plan (Revised June 1, 2002)

1.9 Funding Sources

IFPA funding will be the responsibility of the Board of Directors of the OIFS, and comes from a variety of sources which may include Forest Licensee investments and research agency partnerships.

1.9.1 Membership Contributions

The membership of the Society directly provide contributions to the Society to support IFPA activities.

1.9.2 FRBC Multi-year Agreements (MYAs)⁶

Where needs identified in the Forestry Plan met FRBC eligibility criteria and strategic objectives for 2001/2002, funding was shifted from existing activities in member company MYAs.

Seven members of the Society (Federated Co-operatives Limited, Gorman Bros. Lumber Ltd., LP Engineered Woodproducts Ltd., Riverside Forest Products Limited (in partnership with Bell Pole Company), Tolko Industries Ltd. and Weyerhaeuser Company Ltd.) held MYAs with FRBC and provided funding from these MYAs on behalf of the OIFS membership to support FRBC eligible IFPA activities.

Note: Selkirk Timber Company and the Ministry of Forests Small Business Forest Enterprise Program in the Okanagan TSA, both members of the OIFS, did not hold MYAs with FRBC.

1.9.3 Forest Investment Account (FIA)⁷

Effective April 1, 2002, member licencees will be contributing funds from their FIA accounts to the Society for FIA eligible and IFPA eligible activities.

1.10 AAC Allocation⁸

Any uplift in AAC that is gained through the activities of the Society will be reallocated to the members of the Society, listed below. The proportional share to Society members allocations have yet to be finalized and will be provided, upon submission of any uplift request made in the future. The members of the Society potentially receiving an uplift include the following:

- Bell Pole Company
- Federated Co-operatives Ltd.
- Gorman Bros. Lumber Ltd.
- LP Engineered Wood Products Ltd.
- Riverside Forest Products Ltd.
- Selkirk Timber Company.
- Tolko Industries Ltd.
- Weyerhaeuser Company Ltd.
- Ministry of Forests Small Business Forest Enterprise Program in the Okanagan TSA.

⁶ Minor changes to this section were made as part of minor amendments to the Forestry Plan (Revised June 1, 2002) including the removal of reference to a Multi-recipient agreement.

⁷ Section added as part of minor amendments to the Forestry Plan (Revised June 1, 2002)

⁸ Section added as part of minor amendments to the Forestry Plan (Revised June 1, 2002)

2.0 OKANAGAN TIMBER SUPPLY AREA

2.1 Overview

The Okanagan TSA, situated in southern central British Columbia, covers approximately 2.26 million hectares of landbase and is one of the most ecologically complex areas of the province. Approximately 320 km long and 140 km wide, it stretches south from Seymour River / Shuswap Lake to the Canada - U.S.A border and west from the Monashee Mountains to the Okanagan Range. The area features many lakes including Okanagan, Shuswap, Osoyoos, Mabel, Sugar, Kalamalka, Wood, Vaseux and Skaha. The region includes a diversity of ecosystems and biogeoclimatic zones. In particular, the region is also noted for its arid landscape, which is unique in Canada. The area also includes the largest number of rare, endangered and threatened species in BC., due to the relative rarity of ecosystems in the southern Okanagan, and the high level of urban development and population growth (LUCO, 2001).

According to the 1996 census, the population of Okanagan Timber Supply Area was 313,000 people and is one of the fastest growing areas of the province with an expectation that the population may⁹ double over the next 25 years. More than 54% of the population lives in the four largest centres of Penticton, Kelowna, Vernon and Salmon Arm.

In the Socio-Economic Analysis of TSR II (July 2000), the forest sector was identified as a major economic contributor to the Okanagan. The Okanagan Timber Supply Area currently supports an Allowable Annual Cut of 2,655,000 cubic meters based on current forest operations regulated under the Forest Practices Code and encompasses the Penticton, Salmon Arm and Vernon forest districts (Ministry of Forests, 2001a).

The area's natural resources provide the foundation for the establishment of the local economy, with its early economy based on primary industries, such as agriculture, forestry and mining. More recently, the local economy has become more diversified, with significant manufacturing, tourism and service sectors. The area's natural resources continue to make an important contribution to the health and growth of the local economy - both through ongoing activity in the forestry, agriculture and mining sectors, and through the provision of scenic views and recreational amenities that continue to attract new residents and tourists to the area.

The area of interest defined by the Okanagan IFPA agreements include forested crown land within the geographic boundary of the Okanagan TSA excluding the following landbase tenures:

- ◆ Tree Farm Licenses (TFL15, TFL33, TFL49)
- ◆ Woodlots (All)
- ◆ Timber Licenses (All)

Several Timber Licenses exist within the boundaries of the Okanagan TSA and are not considered as part of the TSA in the short term. The TLs will be included into the TSA upon expiration of the Timber Licenses in 30 to 50 years.

- ◆ Community Forests

It is acknowledged by the Society that there is currently a proposal under negotiation to allocate a Community Forest to the Westbank Indian Band. Nonetheless, until such time as a community forest is allocated by the government, the area under negotiation will remain within the Timber Supply Area in the short term harvest flow. The timber supply analysis will take into account of the areas reverted to the TSA in the Long Term Harvest Level. It is expected that should a Community Forest be allocated the area will then be removed from the Timber Supply Area and the Society would then address the issue in a future amendment of the Forestry Plan.¹⁰

In addition, the Society will liaise with the non-replaceable Forest Licence holders within the IFPA area of interest to discuss the implications of the IFPA activities on these licences.¹¹

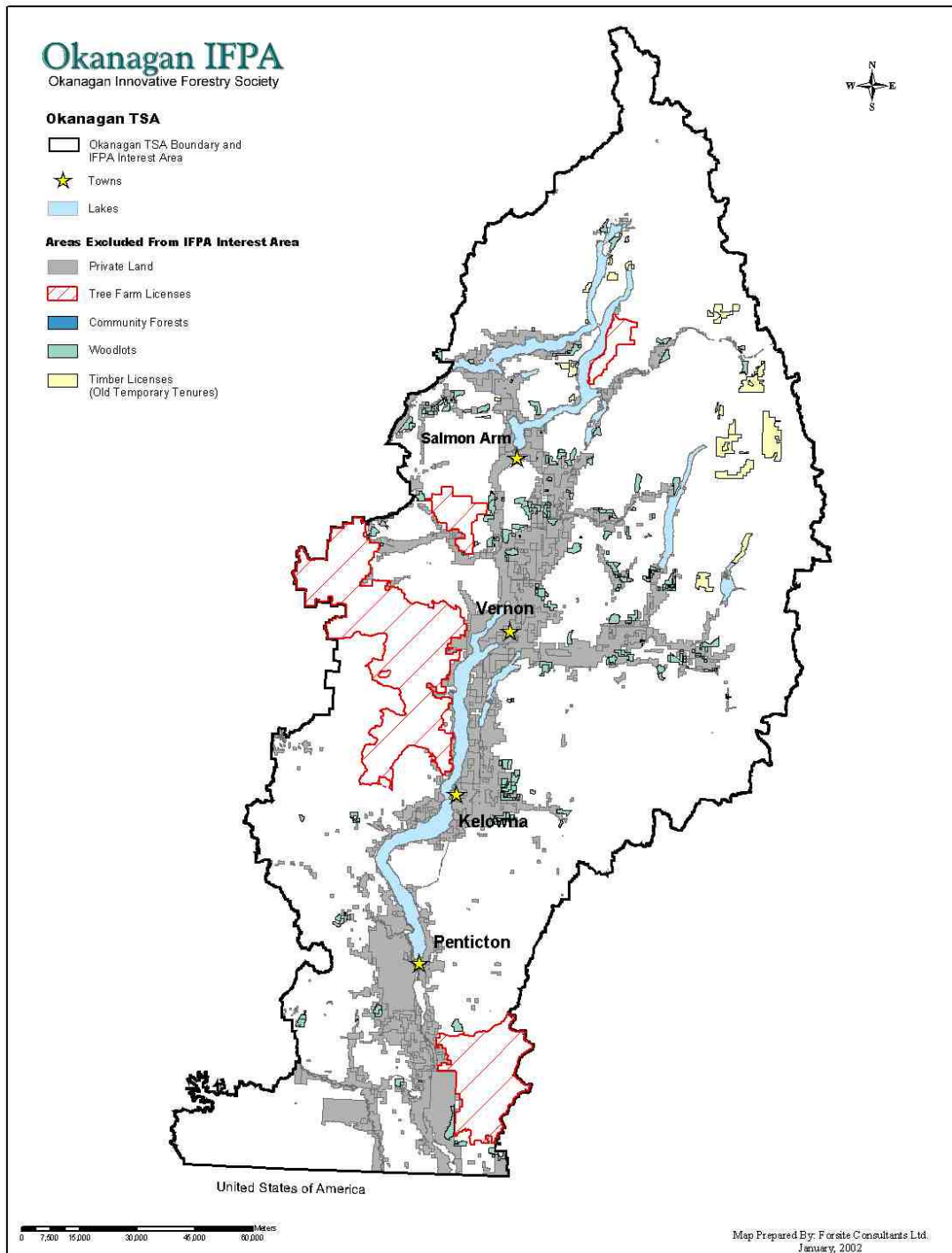
⁹ Word "may" (Revised March 8, 2002)

¹⁰ Paragraph "The area of interest... amendment of the Forestry Plan." (Revised March 8, 2002)

¹¹ Paragraph added as part of minor amendments to the Forestry Plan (Revised June 1, 2002)

2.2 Key Map

Figure 2. Key map of the Okanagan TSA.¹²



¹² Map showing areas included under the plan (Revised March 8, 2002)

2.3 Current Uses and Values

The Okanagan TSA has a diverse range of inter-related environmental, social and economic values. The OSLRMP identified current uses and values within the TSA. The OSLRMP will be used as a foundational document for the activities of the Okanagan IFPA. The following sections reflect the strategies identified in the OSLRMP (LRMP, 2000). LRMP sections are identified in bracketed italics. To obtain further detail on these references, the OSLRMP document and supporting information can be sourced at the Ministry of Forests or the LRMP website:

srmwww.gov.bc.ca/sir/lrmp/okan/index.html

2.3.1 Environmental Values

For the purposes of this document the following are considered environmental values in the Okanagan TSA, within the context of the OSLRMP:

- *Red and blue listed species:*
 - The TSA provides habitat for numerous red and blue listed species many of which are associated with lower elevations adjacent to private land (*WILDLIFE 3-2*).
 - Minimize impacts to regionally important species (*CROWN 3-6*).
 - Provide sufficient quantity and quality of habitat to secure long-term viability of rare elements (*WILDLIFE 3-5*)
- *Maintain or enhance habitat and manage the impact of development on:*
 - marten (*WILDLIFE_MARTEN 4-1*)
 - fisher (*WILDLIFE 3-9*)
 - fish habitat including bull trout and rainbow trout (*FISH 4-1*)
 - bighorn sheep (*WILDLIFE_BIGHORN 4-1 and WILDLIFE_DERENZY 4-1*)
 - elk (*WILDLIFE_ELK 4-1*)
 - grizzly bears (*WILDLIFE_GRIZZLY 4-1*)
 - moose (*WILDLIFE_MOOSE 4-1*)
 - caribou (*WILDLIFE_CARIBOU 4-1*)
 - mountain goats (*WILDLIFE_GOAT 4-1*)
 - mule deer (*WILDLIFE_MDEER 4-1*)
- *Biodiversity:* Manage for biodiversity by establishment of wildlife tree patches, avoiding disturbance to rare ecosystems, maintaining representative old growth forests, retaining basic levels of coarse woody debris and providing enhanced levels of coarse woody debris (*EMFOREST 3-1*)

- *Forest health:* Manage factors to an acceptable risk level (*HEALTH 3-2*)
- *Riparian habitat:* Provide adequate riparian habitat to sustain healthy ecosystems and fish and wildlife populations (*RIPARIAN 3-1*)
- *Water:* is a primary and fundamental resource and a crucial component of the TSA's ecosystems (*WATER 3-1*)
- *NDT4: Manage fire maintained habitats to reflect its natural diversity and disturbance history/patterns* (*NDT4 4-3*)

2.3.2 Social Values

For the purposes of this document the following are considered social values in the Okanagan TSA, within the context of the OSLRMP:

- *Recreation:* Uses of Crown land include downhill ski operations, destination resorts, guided nature viewing, heli-skiing, (*CROWN 3-2*). Outdoor recreational activities include hiking, biking, hunting, trail riding, wildlife viewing, fishing, canoeing, cross-country skiing, motorcycling and snowmobiling (*REC 3-1*). Minimize impact to recreational opportunities adjacent to settled areas (*CROWN 3-7*). Retain recreational values of regionally significant trail corridors (*REC 4-5*)
- *Access:* Provide access to Crown lands while minimizing conflict between user groups and negative effects on the environment (*6-1*)
- *Heritage resources:* Maintain and protect heritage resources including archaeological, traditional use and historic sites (*HERITAGE 3-1*)
- *Grazing:* Provide opportunities for sustainable livestock grazing (*RANGE 3-3*)
- *Visual quality:* Maintain naturally appearing landscapes and encourage new practices and techniques that maintain visual quality. (*VISUAL 4-2*)
- *Water quality:* There are 50 community watersheds in the Okanagan TSA (Ministry of Forests, 2001a). Maintain water quality in community watersheds to minimize, where possible, water treatment procedures. (*CWS 4-2*). Manage Mission Creek watershed in a holistic and integrated manner (*MISSION 4-2*)
- *Other Land uses:* sand and gravel quarries, utility corridors, communication sites, community/institutional facilities (*CROWN 3-2*).

2.3.3 Economic Values

Early economic activity in the Okanagan was based on the development of the region's abundant natural resources, with its economy focused on primary industries such as forestry, agriculture and mining. While forestry is still the largest economic driver in the Okanagan, the area has become more diversified with significant development in manufacturing, tourism and the service industry. The natural resources of the TSA continue to attract more residents and tourists to the region and continue to play a large role in the regions economy through the forestry, agriculture and mining industries.

The forest sector plays a large role in the Okanagan and has been identified as a major economic contributor (Ministry of Forests, 2000b):

- Eight major sawmills and approximately 100 small milling operations, and approximately 85 independent value added operations (*TIMBER 3-2*)

2.3.4 Current Employment in the Forest Industry

The forest sector directly supports 11% of all employment in the Okanagan region (B.C. Ministry of Finance and Corporate Relations, 1999). The forestry sector also supports many other jobs in the region from companies and employees purchasing goods and services throughout the region. For every 100 direct forestry jobs in the Okanagan, another 33-67 indirect and induced jobs are supported, dependent on the forestry activity. This is in comparison to 100 direct jobs in the tourism or public sectors supporting 7 to 16 indirect or induced jobs (BC Ministry of Finance and Corporate Relations, 1996).

The forest industry also provides a significant level of employment and employment income in the Okanagan Region and the Province of British Columbia (Table 1).

Table 1. Potential employment and employment income supported by the current AAC in the Okanagan Region and percentage of local employment/income.

Employment Measures	TSA	Provincial*	Percentage of Local Employment/Income
Direct Employment (person years)	3,259	3,644	89%
Total Employment (person years)	5,411	8,069	67%
Total Employment Income (\$1998 millions per year)	\$163	\$235	69%

*Inclusive of the Okanagan TSA potential employment
Source: Ministry of Forests (2000b) given AAC of 2.6 million m³.

Employment within the forestry sector is focused on the direct industry and timber processing activities, with other activities such as silviculture and harvesting contributing smaller numbers (Table 2). Table 2 also includes the employment coefficients which outline the importance of the forest sector in the Okanagan region and to highlight the contribution that the forest sector makes to the provincial economy.

Table 2. Okanagan TSA employment and employment coefficients by forest industry activity.

Forest industry activity	TSA employment (person-years)	TSA employment coefficients (person-years per '000m ³)	Provincial employment (person-years)	Provincial employment coefficients (person-years per '000m ³)
Harvesting	919	0.32	947	0.33
Silviculture	417	0.14	448	0.15
Processing	1,923	0.66	2,248	0.77
Total direct	3,259	1.12	3,644	1.25
Indirect and induced	2,152	0.74	4,425	1.52
Total Employment	5,411	1.86	8,069	2.77

Source: Ministry of Forests (2000b)

Note: Wood products transport and road building/maintenance are included in indirect estimates.

2.3.5 Employee Levels by Licencee

Nine major forest licencees contribute to forestry related employment in the Okanagan TSA (Table 3).

Table 3. *Employment levels by licensee and forest industry activity in the Okanagan Region.*

Licencee	Employment (Person-years)	
	Harvesting, silviculture and administration	Processing
Riverside Forest Products Ltd.	380	570
Federated Co-operatives Limited	145	270
Weyerhaeuser Corporation	150	180
Gorman Bros. Lumber Ltd.	120	190
Tolko Industries Ltd.	105	140
Louisiana-Pacific Canada Engineered Wood Products Ltd.	65	105
Bell Pole Ltd.	20	30
Selkirk Timber Company	5*	7*
Ministry of Forests SBFEP in the Okanagan TSA	147*	220*

Source: Ministry of Forests (2000b)

Notes: The employment numbers relate only to the volumes harvested within the Okanagan TSA.

* The Selkirk Timber Company and SBFEP, also operating in the Okanagan TSA, was not discussed in existing TSR documentation and these numbers are estimates extrapolated from jobs produced per 1,000 m³ for other forest licencees in the Okanagan.

2.3.6 AAC by Licencee

The Okanagan TSA, which is also the Okanagan IFPA area of interest, covers 2.26 million hectares. In 1996 the TSR I determination identified the allowable annual cut for the Okanagan TSA at 2,615,000 m³. This AAC was apportioned across the range of major and minor tenures (Table 4) and to the licencees operating within the TSA (Table 5).

Table 4. 1996 AAC determination apportionment by licence type in the Okanagan TSA.

Type of Licence	Volume (m ³ /year)	Percent (%)
Forest licences, replaceable	2,138,867	81.8
Forest licences, non-replaceable	15,000	0.6
Timber sale licences, replaceable	35,936	1.4
Small Business Forest Enterprise Program (SBFEP) – all categories	361,974	13.8
Woodlot Licences	37,073	1.4
Forest Service Reserve	26,150	1.0
Total	2,615,000	100

Source: Ministry of Forests (2001a)

Table 5. AAC apportionment by replaceable forest licenses in the Okanagan TSA as per TSR I (1996).

Licencee	AAC (m ³)
Riverside Forest Products Ltd.	767,413
Weyerhaeuser Corporation	380,031
Ministry of Forests SBFEP in the Okanagan TSA	361,974
Federated Co-operatives Limited	332,963
Tolko Industries Ltd.	234,228
Gorman Bros. Lumber Ltd.	231,349
LP Engineered Wood Products Ltd.	147,597
Bell Pole Ltd.	45,286
Selkirk Timber Company	12,765

Source: Ministry of Forests (2001a) and Ministry of Forests (2001b)

The TSR II determination, effective August 1, 2001, set the AAC for the Okanagan TSA at 2,655,000 m³. Of this total, 2,575,000 m³ is to be harvested as described in Ministry of Forests (2001a) with the remaining AAC (80,000m³) to be allocated to the small scale salvage program administered in the TSA¹³. The TSR II determination does not include woodlot licence AACs.

¹³ Following footnote added as part of a minor amendment to the Forestry Plan (Revised June 1, 2002). The Small Scale Salvage Program (SSSP) is still subject to the approval of the minister's TSA apportionment; accordingly, the SSSP volume is also subject to review under the IFPA basecase.

2.3.7 Stumpage/Taxes Paid by the Forest Industry

The annual potential provincial revenue from the forest industry associated with the Okanagan TSA timber harvest has been estimated at \$103.2 million (BC Ministry of Forests, 2000b). Average annual provincial government revenues generated by the forest industry in the Okanagan TSA between 1996 and 1999 (Table 6) have exceeded that estimate.

Table 6. Provincial revenue generated directly by the Okanagan forest industry by revenue type.

Revenue Type	Average annual revenue 1996-1999 (\$1997 millions)	Revenue (\$ per '000s m ³)
Stumpage, rents and royalties	66.5	22,868
Industry taxes	21.6	7,427
Provincial income tax	26.8	9,215
Total government revenues	115.0	39,510

Source: Ministry of Forests (2000b).

2.3.8 Other Forest Resource Industries

The Okanagan region is ranked as having one of the largest number of value added timber processing facilities in B.C. These facilities process lumber into products such as engineered building products, garden products and furniture.

In addition to numerous timber based resource industries, the Okanagan has many industries that are supported by the regions natural landscapes and forest resources. These include hunting, fishing, recreation/tourism, guide-outfitting, trapping and range:

- The TSA accounts for over 6% of the total provincial hunter days or approximately \$4.5 million (*WILDLIFE 3-1*)
- There were approximately 550,000 angler days in the Okanagan TSA area in 1995 (*FISH 3-1*)
- There are approximately 500 businesses within the Okanagan TSA that are directly dependent on the Tourism Industry (*TOUR 3-1*)
- There are 8 active guide-outfitters in the LRMP area (*GUIDE 3-1*)
- There are approximately 80 traplines in the TSA (*TRAPPING 3-1*)

2.4 Inventories

As part of this Forestry Plan, the Technical Committee is generating a list of inventories and assessments conducted by or on behalf of the forest industry within the TSA. This list will satisfy one of the content requirements of the Forestry Plan, in accordance with Section 59.1 of the

Forest Act and will assist in identifying inventory gaps and may identify data to support an increase in the AAC for the TSA.

The methodology used to gather inventory information from across the TSA is included in Appendix XIV. A full copy of the key fields in the inventory list has been compiled and is included in Appendix XV.

As part of the strategic analysis for the Okanagan IFPA, the Society has begun identifying the critical inventory gaps in the TSA. The Chief Forester identified a number of information gaps in his rationale statement for TSR II (Appendix XIII). Where appropriate, the IFPA will attempt to address these gaps.

3.0 INNOVATIVE FORESTRY PRACTICES

3.1 Strategic Analysis

The strategic analysis for the TSA will be completed, in part, through the Silviculture II strategy. The focus of the strategic silviculture analysis is to test innovative forest management scenarios to identify appropriate management regimes for the Okanagan TSA. The analysis will include the following:¹⁴

- Additional AAC rationale scenario incremental to the January, 2001 base case.
- Appropriate sensitivities around the AAC rationale scenario, incremental to the January, 2001 base case, in order to provide direction for development of IFPA programs.

The silviculture analysis will be based upon the following assumptions:

- The IFPA base case is to reflect all issues considered in the Chief Foresters AAC determination for the Okanagan TSA,
- Incremental impacts of IFPA activities are to be measured relative to the Okanagan Shuswap LRMP base case,
- Analysis is to be based on the MoF analysis performed for TSR II,
- Modifications to the analysis based on requirements and considerations expressed by the Chief Forester and
- Spatial data representing IFPA eligible¹⁵ Chief forester considerations to be provided where available¹⁵ in Arc/Info format.

The data package and Okanagan Shuswap LRMP base case analysis will be available for review during the winter 2001/02 and will be included in a future amendment to the Forestry Plan. All studies completed by the IFPA will be incorporated into the Forestry Plan and compared to the January, 2001 base case and associated sensitivity analyses.¹⁶

3.2 Proposed Innovative Forestry Practices

The Okanagan Innovative Forestry Society will consider implementing projects under the categories described below, to meet the objectives outlined in this Forestry Plan:

Landbase – projects associated with improved inventories and an improved understanding of the landbase

Growth and Yield – projects associated with the growth of forest stands and the yields (m³) from those stands.

Management Activities – projects associated with practices, i.e. innovative silviculture and timber harvesting practices, that are implemented on the landbase

Details on specific projects have been included in Appendix IX.

¹⁴ Minor changes to bullets to identify that the focus of timber supply analysis and scenerios will be incremental to the January, 2001 base case (Revised June 1, 2002)

¹⁵ Word “eligible” and “where available” added for clarification as a minor amendment to the Forestry Plan (Revised June 1, 2002). Eligibility also added to Appendix XIII.

¹⁶ Last sentence in this section added as part of a minor amendment to the Forestry Plan (Revised June 1, 2002)

3.2.1 Landbase

Opportunities may exist for increasing the productive timber harvesting landbase available to sustain increased timber production. This opportunity may be realized through conducting inventories that will narrow the knowledge gaps and by initiating research into alternative harvesting and silviculture methods that, if implemented, may increase the productive landbase. Landbase projects may include the following:

Definition and Refinement of the Timber Harvesting Land Base (THLB), including, but not limited to, the following areas:

- Environmentally Sensitive Areas (ESAs) – evaluation of designation and accuracy, comparison with unstable areas as identified through Terrain Stability Mapping
- Operability Lines – possible refinement
- Operational Adjustment Factors (OAF1) – possible refinement
- Old Growth Management Areas (OGMAs) – evaluate the objectives, definition, deployment and management of these areas
- Biodiversity – evaluation of associated constraints
- Ecosystem Management – evaluation of associated constraints
- Roads, Trails and Landings – evaluation of assumptions and existing conditions on the landbase

Improving Resource Inventories¹⁷

- Vegetation Resource Inventory (VRI) – to improve information on forest stands and volumes
- Predictive Ecosystem Mapping (PEM) – to improve information on ecosystem productivity and its impacts on timber supply
- Site Index Assignment (SIA) to improve information on Site Index using an innovative biophysical model in the Okanagan wetbelt¹⁸
- BEC Refinement – continuation of regionally approved classification project
- Evaluation of habitat requirements in Deer Winter Range Areas – to improve ability to manage for this species and evaluate the impact of this management on timber supply
- Evaluation of habitat requirements for Pine Marten – to improve ability to manage for this species and evaluate the impact of this management on timber supply
- Evaluation of habitat requirements for Caribou – to improve ability to manage for this species and evaluate the impact of this management on timber supply
- Assess VQO linework for all non-visible areas in Zone 1 and 2 through spatial modelling to improve the quality of the visual inventory¹⁹
- Forest health inventory to support forest health planning²⁰

¹⁷ Terrain Stability Mapping removed as the activity is not IFPA eligible.

¹⁸ Site Index Assignment in the Okanagan Wetbelt introduced as an innovative forestry practice.

¹⁹ Approach to VQO studies expanded as part of a minor amendment to the Forestry Plan (Revised June 1, 2002).

²⁰ Forest health inventory bullet added as part of a minor amendment to the Forestry Plan (Revised June 1, 2002).

- Riparian Classification – to improve our knowledge of the resource and associated riparian classification and the impacts on timber supply
- Consolidation of stream and fisheries information – to optimize the use of existing information on fish and stream inventory

3.2.2 Growth & Yield

There is a potential for a more accurate understanding of the yields from the forests following investment into growth and yield analysis and research in the Okanagan TSA. Such projects include the following:

- Site Index Biogeoclimatic Ecosystem Classification (SIBEC) – to improve growth estimates, including opportunities for OGSi within the Okanagan TSA
- Net Volume Adjustment Factors (NVAF), following VRI – to improve volume estimates
- Growth intercept method of Site Index Assignment – to quantify and characterize the growth of eligible regenerated stands
- Evaluation and use of improved seed – assess yields and opportunities to increase the use of improved seed
- Evaluation and use of fertilization – assess yields from fertilization

3.2.3 Management Practices

Management practices may include the following strategies:

Under-performing Stands – evaluation and implementation of measures to re-establish free growing stands, productive stands, etc.

Low Productivity Stands – evaluation and implementation of measures to improve productivity of these stands

In addition, research and implementation of the following silviculture treatments will be considered:

- Juvenile Spacing – to improve stand growth or meet other non-timber values
- Commercial Thinning – to improve volume recovery or to meet other non-timber values
- Fertilization – for other (non-timber) benefits
- Pruning – for the improvement of wood quality or other non-timber values
- Forest health treatments – as identified through forest health planning²¹

Additional silviculture treatments or landbase management activities will be identified following the completion of the Silviculture II Strategy and may be included in the subsequent amendment of the Forestry Plan.

²¹ Forest health treatments bullet added as part of a minor amendment to the Forestry Plan (Revised June 1, 2002).

3.2.4 Additional Activities

Land management practices to protect and enhance other resource values may include, but are not limited to, water, fisheries, wildlife, biological diversity, soil productivity and stability, forage production, grazing and recreation values.

3.3 Management Objectives

3.3.1 Timber

The timber management objective of the IFPA is to increase the AAC in the Okanagan TSA, measured by:

- Seeking a scientifically defensible request for uplift of the AAC as part of Forestry Plan amendments. The uplift request may be supported by the Silviculture II Strategy, PEM, VRI, Site Index Assignment and other activities scheduled by the Society.

3.3.2 Conservation and Enhancement of Non-Timber Values

The non-timber management objectives are clearly identified in the OSLRMP declared by Cabinet as policy direction on January 18, 2001. All works being proposed by the Society will be generally consistent with the objectives of the OSLRMP.

3.4 Economics

The projected economic/employment related benefits of the IFPA are linked to the proposed expenditures (Appendix VIII) and employment (Appendix X) generated from IFPA activities over the next five years. A summary of this information is included below (Table 7).

Table 7. Summary of proposed expenditures and employment associated with IFPA scheduled activities.²²

Year	Expenditures (\$ Million)	Employment (person years)
2002/3	2,334	26
2003/4	1,850	23
2004/5	1,787	22
2005/6	1,670	21
2006/7	1,205	16
Total	8,846	108

3.5 Information Management Systems²³

The management of the IFPA datasets is an important aspect of the OIFS program. The Society will incorporate the results of an Information Management System program needs assessment in future amendments to the Forestry Plan.

²² Summary table updated as part of minor amendments to the Forestry Plan (Revised June 1, 2002)

²³ Paragraph added as part of minor amendments to the Forestry Plan (Revised June 1, 2002)

4.0 WORK PLAN AND FIVE YEAR SCHEDULE

4.1 Planned Treatments

Planned treatments will be identified during the Silviculture II Strategy workshop and Okanagan Shuswap LRMP base case sensitivity analysis, scheduled for completion in December, 2001, and will be included in a future amendment to the Forestry Plan.

4.2 Employment

Details on employment opportunities and levels will be identified during the Silviculture II Strategy workshop and Okanagan Shuswap LRMP base case sensitivity analysis, scheduled for completion by December, 2001, and will be included in a future amendment to the Forestry Plan. In addition, employment opportunities or estimates will be developed for all projects proposed in the Forestry Plan.

Preliminary estimates of employment generated by IFPA activities are found in Appendix X.

4.3 Funding Sources and Investment Plan

Funding for the Society is derived from a number of sources, including:

- OIFS membership contributions
- Forest Renewal BC Multi Year Agreements with Forest Licencees in the Okanagan
- Government contributions
- Other agency contributions

The annual workplan for OIFS core activities identifies the working capital required to complete the detailed work plans in the current fiscal year.

The five year forecast provides anticipated funding requirements to complete known working projects. The five year forecast for the period 2002 – 2007 is largely contingent on the results of the Silviculture II Strategy and Okanagan Shuswap LRMP base case sensitivity analysis being conducted in the fall of 2001. As such, the details included in this 5 year forecast focus on broad silviculture activities and project specific inventory activities.

An summary of the annual workplan for the fiscal year 2001/2002 and the five year forecast is provided in Appendix VIII.

4.4 Net Expected AAC Gain

Net AAC gains may²⁴ be identified through the Silviculture II Strategy and subsequent Timber Supply Analyses in which the effects of PEM, VRI and Site Index Adjustment and other related projects will be incorporated. Any net AAC gain will be identified as part of, and requested in, future amendments to the Forestry Plan.

²⁴ Word “may” (Revised March 8, 2002)

4.5 Future Management Plans

IFPAs are for a term of 10 years and require the submission of a Forestry Plan within 24 months of the effective date of the IFPA and at least once every five years thereafter.

A future amendment to the Forestry Plan will incorporate new information collected since the inception of this IFPA including the Silviculture II Strategy and the Okanagan Shuswap LRMP base case sensitivity analysis.

Annual work plans will also be developed and will provide details of projects and implementation procedures and will be consistent with the overall strategic direction of the Forestry Plan. Annual work plans may²⁵ be available for 30 day public review by February 1st of each year and may²⁶ be considered major amendments to the Forestry Plan. The effective dates of the annual work plans is scheduled for April 1st of each year.

4.6 Communications and Extension

Communication and the extension of information are vital to the success of the IFPA by encouraging awareness, understanding and support.

The communications strategy of OIFS includes:

- website **www.okanagan-ifpa.org**
- communication bulletins
- annual project review
- public information
- contact list/ mailing list
- media package

Additional detail on the communication strategy of the Society can be found in Appendix IV.

²⁵ Word “may” (Revised March 8, 2002)

²⁶ Word “may” (Revised March 8, 2002)

5.0 TIMBER SUPPLY ANALYSIS

5.1 Okanagan Shuswap LRMP Base Case Timber Supply Analysis

Methodology

The Okanagan Shuswap LRMP base case timber supply analysis used in the Okanagan TSA TSR II (effective August 1, 2001) will be considered the base case for the Forestry Plan. For information regarding this base case please refer to the following documentation:

- Information Report and Data Package (Ministry of Forests, 1999) (Appendix XI)
- Analysis Report (Ministry of Forests, 2000b)
- AAC Rationale (Ministry of Forests, 2001a)

Results of the Okanagan Shuswap LRMP Base Case Timber Supply Review can be found in Appendix XII.

5.2 Innovative Practices Scenario

To be provided following the completion of the Silviculture II Strategy and Okanagan Shuswap LRMP base case sensitivity analysis.

6.0 REFERENCES

- Ministry of Finance and Corporate Relations. 1999. The 1996 Forest District Tables. Government of British Columbia.
- Ministry of Forests. 2001a. Timber Supply Review – Okanagan Timber Supply Area Rationale for Allowable Annual Cut (AAC) Determination. Government of British Columbia.
- Ministry of Forests. 2001b. Timber Tenures – Kamloops Forest Region. Government of British Columbia.
- Ministry of Forests. 2000a. Timber Supply Review – Okanagan Timber Supply Area Public Discussion Paper. Government of British Columbia.
- Ministry of Forests. 2000b. Timber Supply Review – Okanagan Timber Supply Area Analysis Report. Government of British Columbia.
- Ministry of Forests. 1999. Timber Supply Review – Okanagan Timber Supply Area Information Report and Data Package. Government of British Columbia.
- Land Use Coordination Office (LUCO). 2001. Government Approves Okanagan Shuswap Land-Use Plan.
- LRMP. 2000. Okanagan-Shuswap Land and Resource Management Plan.