



Okanagan IFPA

Okanagan Innovative Forestry Society

August
2002

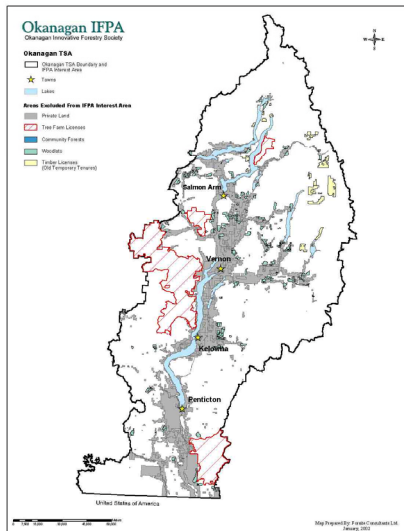
Innovative Forestry Bulletin

How fast does the forest grow?

The OIFS is continuing to study the forests within the Okanagan in order to better understand what is present. Projects in 2002 include a verification of the existing forest inventory (What forests exist around us?) as well as a *site-index adjustment* project (How fast are they growing?). This information will help determine sustainable use of timber and non-timber resources within the forest.

IFPA Area of Interest

All work completed by the OIFS applies to the Okanagan IFPA area of interest. This area is within the boundaries of the Okanagan Timber Supply Area (TSA). Tree Farm Licenses, private land and woodlots are excluded.



Maps of the area can be downloaded from the IFPA website. Additional description of the IFPA area can be found in the Forestry Plan, also available on the website.

Improved Information to Assist Resource Planning Ecosystem and forest inventory to better reflect reality.

Since its inception in 2001, the Okanagan Innovative Forestry Society has strived to improve the quality of information associated with land and resources within the Shuswap/Okanagan. In 2002, the society is implementing a wide range of projects including the following:

- Sustainable forest management planning
- Ecosystem mapping
- Wildlife habitat studies for Mule deer, Mountain Caribou and Pine Marten
- Forest health planning
- Updated information on growth rates and productivity of Okanagan forests.
- Verification of existing forest inventory
- Examination of timber supply analysis assumptions

Many of the activities undertaken this year represent continued commitment to multi-year projects. The objective of these projects is to improve the knowledge base on the land that we all live and work in. This improved understanding will support better management practices for both timber and non-timber resource values.

Ecosystem Study Continues

The Okanagan IFPA is continuing a study of ecosystems within the Okanagan TSA (Timber Supply Area). Upon completion, proposed for 2005, the multi-year **Predictive Ecosystem Mapping** project will classify the Okanagan TSA by ecosystem. The project will then support a wide range of additional planning and inventory projects that may include site index adjustments, wildlife habitat studies and forest health plans.

Economic Activity and Community Stability

The Chief Forester of the Province of B.C. calculates the amount of timber, or Allowable Annual Cut (AAC), that can be harvested from timber supply areas such as the Okanagan TSA. With the initiation of the Okanagan IFPA, the opportunity has been given to the members of the Okanagan Innovative Forestry Society to improve the inventory, planning and management within the TSA and provide a scientific basis for an increase in the AAC. The OIFS has stated that any future request for an increase in the AAC will be made while maintaining the environmental and social objectives of the Okanagan Shuswap Land and Resource Management Plan. Any AAC increase from the Okanagan forest land will help improve the economic conditions within the region, improving community strength and stability.

Okanagan-IFPA website: Public Access to Innovation

www.okanagan-ifpa.org

The Okanagan IFPA's website continues to be a place where members of the public can gain a wide understanding of the IFPA and its' activities. In the past year, the website has been used to communicate and make available a range of information including:

- Forestry Plan
- IFPA Projects - comprehensive description of program activities
- Request for Proposals for key IFPA projects
- Okanagan IFPA satellite map

The IFPA website will continue to be used as the prime mechanism for public access to the IFPA Forestry Plan and innovative projects.

For further information please contact:
Glen Dick RPF IFPA Manager
Phone 250-547-1208
Cellular 250-308-8958
Email gadick@riverside.bc.ca

